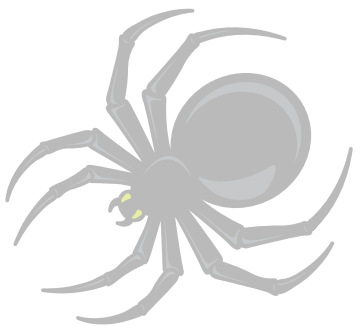


SPIDER



SPIDER



 **GREENTEC**
Cutting Edge Technology



SIMPLE AND FLEXIBLE

GreenTec is a Danish company specialized in machines for the maintenance of green areas. Our products are based on more than 30 years of experience in the field.

All our machines have been developed in a simple, functional, production-friendly and sustainable design. They are manufactured at our factory in Denmark.

We are proud to present the Spider boom mower series, which contains many innovative solutions that provide environmentally and economically benefits for the user while increasing the driving experience and road safety.

The keywords for the Spider are simplicity and flexibility.



CONTENTS

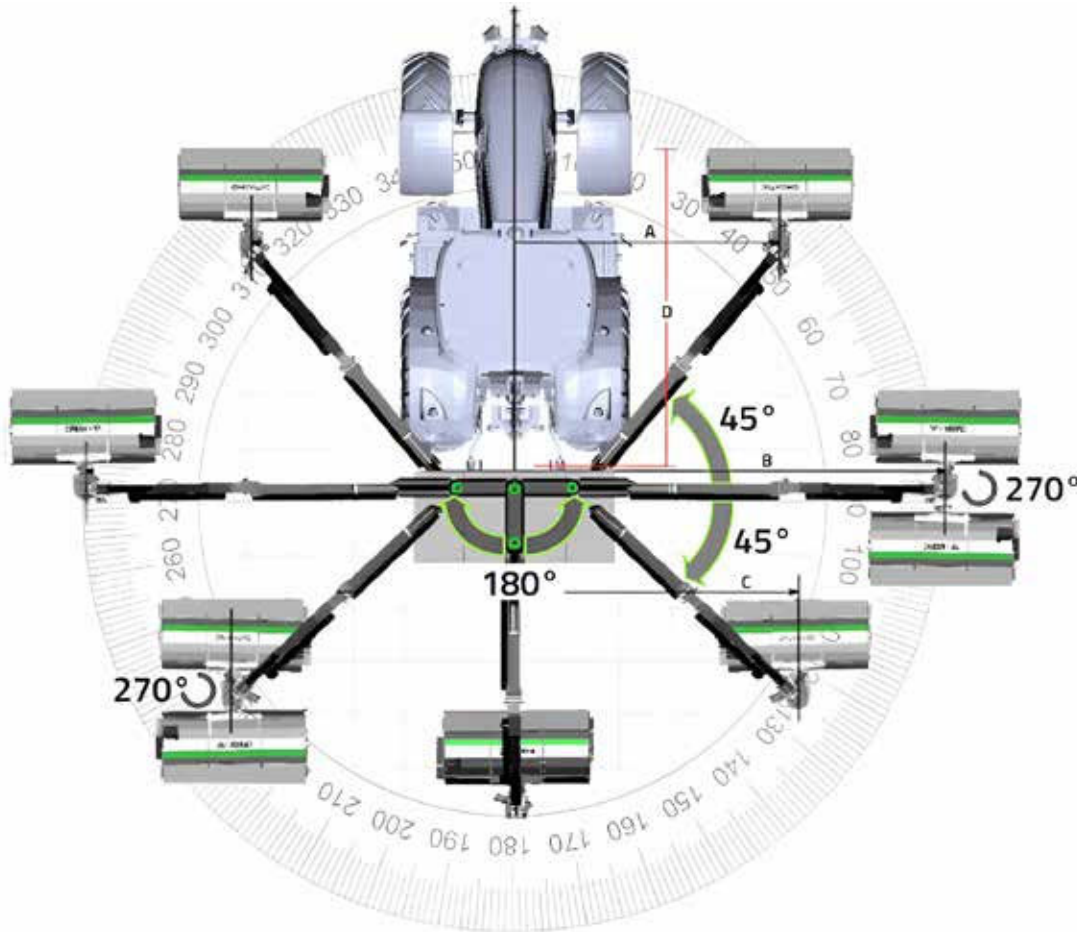
Spider - all the way around	4
Spider - innovation	6
4-point mounting	6
Strenx steel	6
Auto Height Control (AHC)	6
Hybrid arm system	7
Rotor Flex & Auto Flex	7
Side shift frame	7
Spider 6 & 8 series	8
Attachment tools	10



OUR WARRANTY

GreenTec provides a 2-year warranty on all machines. See more on our website: www.greentec.eu

- Left or right
- Front or rear
- Forward or reverse driving
- Reverse mounted



SPIDER - 270 DEGREES TURN OF THE ARM!

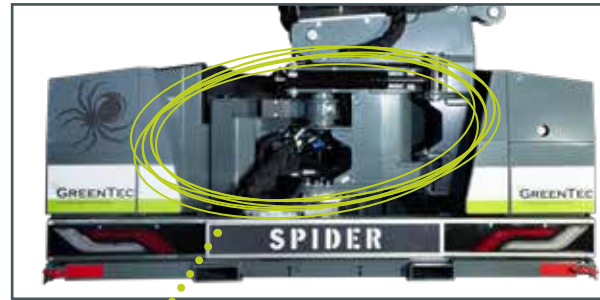
A newly developed concept makes it possible to mow on both sides of the tractor and at the same time bring the cutting head forward into the driver's field of vision. The Spider is available in 4 sizes from 5.2 to 8.2 m (17'1" to 26'11") and 6 models, two of which are front mounted.

The working range of both the arm and the cutting head is 270°. This results in unparalleled flexibility, which makes it possible to move the cutting head in any position - right, left, front or back. The two smallest models, 520 and 620, are delivered either as front or rear mounted. The two largest, 720 and 820, as rear mounted.

SPIDER - ALL THE WAY AROUND



Under the hood.



A centrally mounted side shift frame moves 180° from right to left. Both the arm and the side shift function have automatic hydraulic security in both directions.



The 220 liter hydraulic tank is located on the right side, and the hydraulic valves and oil cooler are located on the left side.



The arm itself is mounted at the end of the frame. The arm can be turned 45°, forwards or backwards. This brings the cutting head right into the driver's field of vision.



The arm is controlled from the cabin and can be moved from the right to left side and into the driver's field of vision.



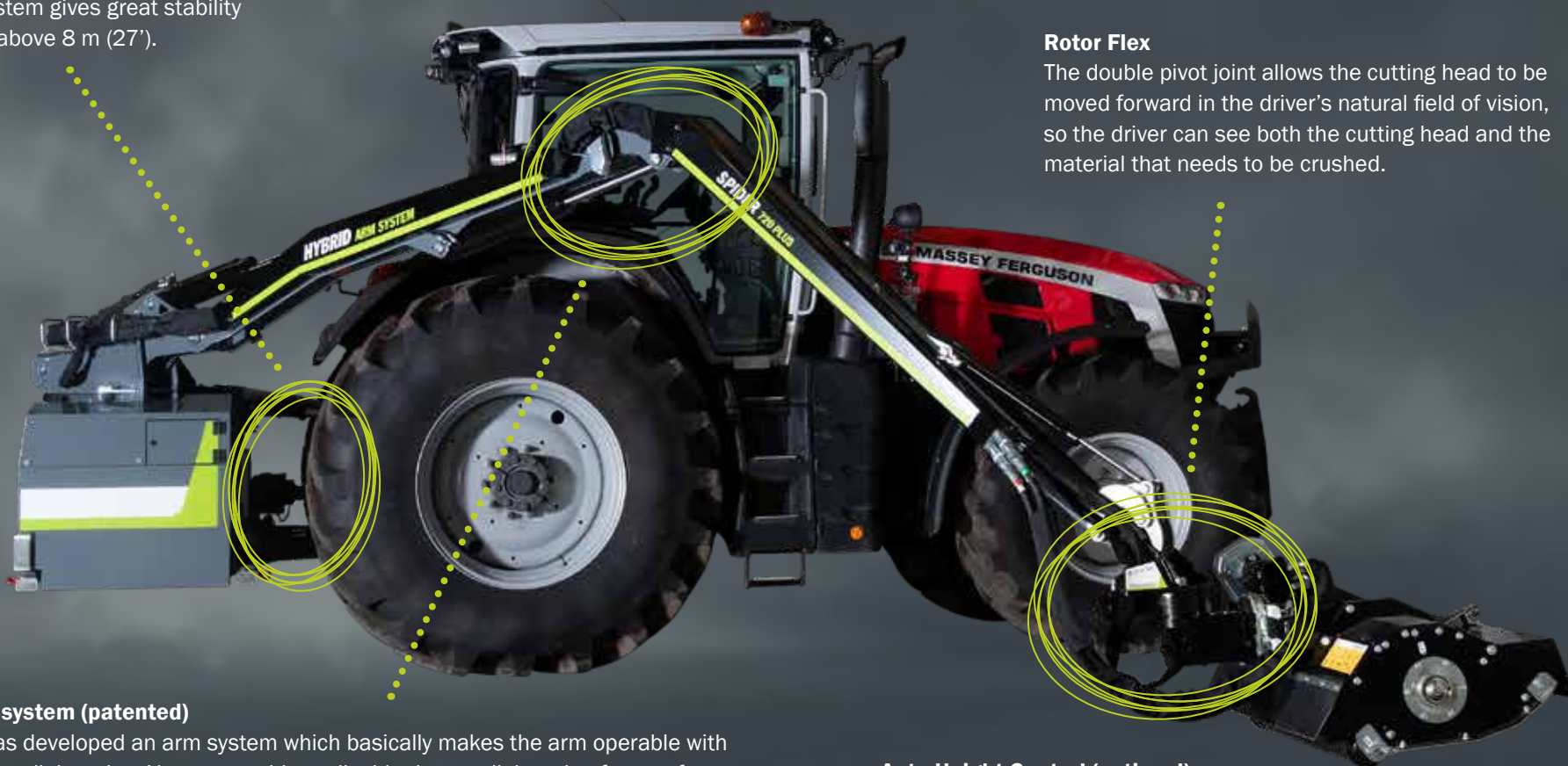
SPIDER - ALL THE WAY AROUND

Strenx steel

The Spider is constructed in the Swedish STRENX 700 structural steel, which has a much higher quality and strength. This results in a stronger and at the same time lighter construction.

4-point mounting (patented)

The mounting system gives great stability even at reaches above 8 m (27').



Rotor Flex

The double pivot joint allows the cutting head to be moved forward in the driver's natural field of vision, so the driver can see both the cutting head and the material that needs to be crushed.

Hybrid arm system (patented)

GreenTec has developed an arm system which basically makes the arm operable with or without parallel motion. You can enable or disable the parallel motion feature from the control panel of the machine. The patented arm system makes the work more efficient and rewards the driver with greater job satisfaction.

Auto Height Control (optional)

Auto Height Control is used for grass mowing and ensures that the cutting head floats above the terrain. It relieves the driver of maneuvering operations, increases road safety and lowers maintenance costs.

* An integrated leaf blower can be purchased as an option.

SPIDER - INNOVATION



4-POINT MOUNTING (patented)

All Spider models come with a 4-point mounting system.

Instead of the traditional three-point mounting, the Spider models have four mounting points on the mainframe. The two lower points are connected to the tractor's lift arms while the two upper points are attached to a triangular frame in the tractor's top link bracket or a K80 ball hitch. The bottom is stabilized with a connection to the tractor's drawbar or K80. In this way, the side forces of the arm are distributed between the 4 points on the tractor: Lift arms, top bar and drawbar.

The 4-point mounting system is an incredibly easy solution and provides 100% stability between the boom mower and the tractor.



4-POINT MOUNTING

- Stable mounting system up to 8.2 m (26'11") horizontal reach
- Fast and easy mounting

STRENX STEEL

Strenx steel is a collective name for all the high strength steel brands supplied by the Swedish Steel Group SSAB. It includes Optim, Weldox and Domex to name a few.

Since 2015, GreenTec has produced machines in Strenx steel. In June 2019, GreenTec became a certified user of Strenx steel. It has cleared the way for more opportunities to manufacture new and competitive products in a lighter, stronger and environmentally friendly design.

The arm on the Spider models is produced in Strenx 700 steel, which has optimized the product's weight and strength ratio.



MY INNER STRENX

- World's strongest manufacturing steel
- 25% weight reduction
- 50% stronger construction
- „My Inner Strenx“-Partner

AUTO HEIGHT CONTROL (AHC)

The AHC is available as optional equipment for the Spider series.

AHC is used for verge and ditch mowing. It ensures that the cutting head floats above the surface and does not mow into the ground by following the contours of the terrain. This is all done automatically. The driver does not need to maneuver the boom mower with the joystick.

AHC can be enabled from the cabin and the driver can concentrate on the traffic and potential obstacles in the way. The fact that the cutting head floats above the ground contributes to far less stress on the device which results in fewer maintenance costs.



AUTO HEIGHT CONTROL

- Work relief for the driver
- Increased road safety
- Lower maintenance costs
- Increased capacity

HYBRID ARM SYSTEM (patented)

The Spider series comes with an arm concept that offers a number of new possibilities and advantages.

The brief explanation is that the Spider models can be controlled with or without parallel motion and you will achieve the best of both worlds on the same machine.

The parallel motion takes place through a Master Slave System and is especially used for hedge trimming. The non-parallel motion shines in cramped conditions, such as forest roads and trails. It can also be particularly useful for grass mowing in slopes and ditches.

There is no need to acquire a telescopic extension for the arm due to the great flexibility of the hybrid arm system.



HYBRID ARM SYSTEM

- Increased flexibility
- Greater capacity
- Reduced weight

ROTOR FLEX & AUTO FLEX

The arm of the Spider can turn 270°, from right to left and vice versa. To position the cutting head, a double swivel joint (Rotor Flex) is fitted, which can also rotate 270°.

This makes it possible to get the cutting head in exactly the position you want: Right, left - forwards or backwards - driving behind the tractor - practically anything is possible.

The Rotor Flex automatically positions the vertical pivot joint correctly. It relieves the stress on the driver and is applied for hedgerow maintenance as the saw or cutter bar automatically is adjusted to cut vertically.



ROTOR FLEX

- Better visibility
- Increased flexibility
- Greater capacity

SIDE SHIFT FRAME

On the Spider, a side shift frame is mounted in the middle of the machine. The frame is continuously rotated hydraulically 180°, from right to left and vice versa.

The arm itself is mounted at the far end of the frame. The arm can turn 45° forward and 45° back. This makes it possible to get the cutting head forward into the driver's natural field of vision without hitting the tractor's cabin - both to the right and to the left.

Both functions are equipped with double-acting collision protection = safety in the event of obstacles!



SIDE SHIFT FRAME

- The cutting head can be moved forward
- Perfect view
- For right and left driving on the road

SPIDER 6 & 8 SERIES



MODEL	520-6	620-6
Horizontal reach (m)	5.2	6.2
Vertical reach (m)	5.1	6.1
Transport width (m)	2.2	2.2
Hydraulic system	125 l/min @ 315 bar	
Mounting	Front or rear mounted	
Minimum size of tractor (kg)*	5,000	6,000
Weight without tools (kg)	2,170	2,195

MODEL	720-8	820-8
Horizontal reach (m)	7.2	8.2
Vertical reach (m)	7.1	8.1
Transport width (m)	2.4	2.4
Hydraulic system	125 l/min @ 315 bar	
Mounting	Rear mounted	
Minimum size of tractor (kg)*	7,000	8,000
Weight without tools (kg)	2,355	2,385

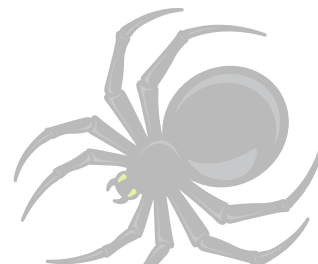
* Indicative. Add 50% extra weight when front mounted

SPIDER 520 PLUS, 620 PLUS, 720 PLUS & 820 PLUS

The Spider is available in 4 sizes from 5.2 to 8.2 m (17'1" to 26'11") divided into 6 models. The two smallest models, 520 and 620, are delivered either as front or rear mounted. The two largest, 720 and 820, as rear mounted.

The working range of both the arm and the cutting head is 270°. This results in unparalleled flexibility, which makes it possible to move the cutting head in any position - right, left, front or back.

The Spider series' hydraulic system and joystick have been developed in close collaboration with Danfoss, which supplies all components for this. The main functions of the arm are operated logically via the joystick where the 4 functions are proportional.





EQUIPMENT & SPECIFICATIONS

ARM SYSTEM

- Side shift frame for right or left driving
- Hybrid arm system with dual function
- 270° hydraulic turn of the arm with power control
- Strenx 700 steel construction
- Rotor Flex, double pivot joint, 270° / 180°
- Auto Flex, automatic adjustment of vertical position

HYDRAULIC SYSTEM

- Danfoss 60 ccm piston pump
- Pump output 125 l/min @ 315 bar (33 gpm @ 4569 psi)
- Danfoss proportional valve PVG 32/16
- Danfoss joystick with 4 proportional functions
- 2 oil flows, 85 and 50 l/min (22.5 and 13.2 gpm)
- Hydraulic float of arm and cutting angle
- Oil cooler
- Air Stream Control – effective oil cooling
- 220 l (58 gallons) oil tank capacity

MOUNTING & SAFETY

- 4-point mounting for cat. 2 or 3
- PTO, 500-750 rpm
- Automatic Hydraulic Security (AHS)
- Transport safety
- LED lights

OPTIONAL EQUIPMENT

- Auto Height Control for verge mowing (AHC)
- Quick release, hydraulic
- Quick release, mechanical
- Hose kit, 4 pieces
- K80 ball hitch for 4-point mounting
- Leaf Blower LG
- Bio oil

ATTACHMENT TOOLS



**ATTACHED TO SPIDER
520 PLUS, 620 PLUS, 720 PLUS & 820 PLUS**



Flail Mower FR 122 & 162



Quadsaw LRS 2002 & 2402



Rotary Mulcher RM 232



Rotary Hedge Cutter RC 162



Cutterbar HX 170 - 270



Cutterbar HS 212 & 242



Rotary Crusher GT 135 & 155*



Weed Clearing Brush BR 90



Grass Cutterbar S 165 - 240

GreenTec offers the widest selection of tools for landscape maintenance.

View more on:
www.GreenTec.eu



Rotary Ditch Cleaner GR 70

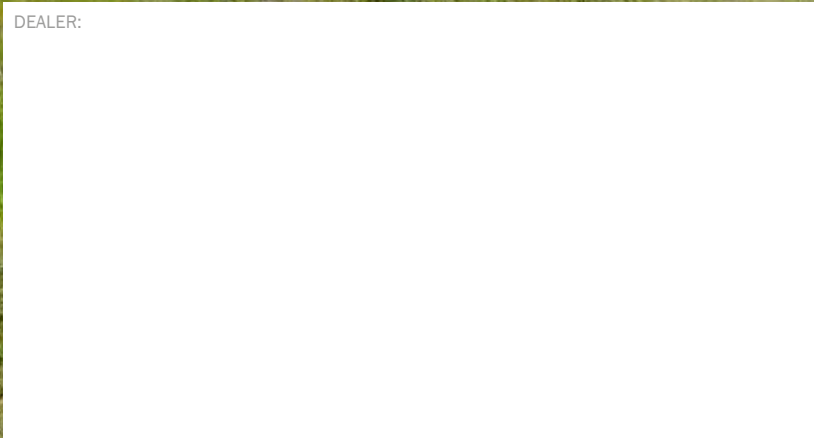


Leaf Blower LG

* The Rotary Crusher GT 155 can only be mounted on the Spider 820-8 PLUS



DEALER:



We reserve the right to make technical changes. Technical information and images are approximated. VER 1.0 EN