

MULTI CARRIER SERIES

MULTI CARRIER SERIES



 **GREENTEC**
Cutting Edge Technology

HIGH-TECH FROM GREENTEC

GreenTec is a Danish company specialized in machines for the maintenance of green areas. Our products are based on almost 30 years of experience in the field.

In 2005 we developed the first Multi Carrier HXF – and with this brochure we proudly present the third generation of our HXF models.

The FOX and HXF models have many innovative features that provide environmentally and economically benefits for the user while increasing the driving experience and road safety.

All machines are developed in a simple and functional design at our facilities in Denmark. We guarantee high quality and reliable products.

CONTENTS

| | |
|---|----|
| Multi Carrier FOX | 4 |
| Multi Carrier HXF overview | 9 |
| Multi Carrier HXF 2302 | 10 |
| Multi Carrier HXF 2802/2802 T | 11 |
| Multi Carrier HXF 3302/3302 T | 12 |
| Technical specifications | 13 |
| Attachment tools for HXF | 14 |



OUR WARRANTY

GreenTec provides a 2-year warranty on all machines. See more on our website: www.greentec.eu





MULTI CARRIER HXF - FLEXIBLE SOLUTIONS

Our HXF series consists of 3 different sizes which fit most loaders. We offer numerous tools for landscape maintenance whether that be hedge trimming, fence mowing or weed removal. The tools make maintenance work a breeze and reduce the time and costs spent on tasks.

MULTI CARRIER FOX



2
Tools

l/min
25-40

4
Levels

2
years
WARRANTY



| MODEL | FOX |
|---------------------------------------|--|
| Reach from center of vehicle to RI 80 | 128 - 188 cm |
| Standard mounting | Cat. 1/2, Euro brackets or universal plate |
| Required oil flow | 25 or 40 l/min @ 190 bar |
| Weight | 150 kg |



MOW FENCES AND GUARDRAILS

The Multi Carrier FOX is specially developed to carry our Barrier Mower RI 60 & 80.

It is an ideal solution for people who are interested in mowing grass under horse fences, guardrails or around trees in orchards.

STRONG ARGUMENTS

- Mounting options for tractors and loaders
- Assembled as either right or left versions
- Adjustable arm: 128 to 188 cm
- Support legs for parking the machine
- Oil flow divider
- Low weight

MULTI CARRIER FOX

MADE IN
DENMARK





| EQUIPMENT | FOX |
|--|----------|
| Oil flow divider | Standard |
| Adjustable arm | Standard |
| Support legs | Standard |
| Cat. 1/2, Euro brackets or universal plate | Standard |
| Other mounting brackets | Optional |

ATTACHMENT TOOLS



BARRIER MOWER RI 60 & 80

- Working width: 0.6 m / 0.8 m

LARGE SELECTION OF BRACKETS FOR TRACTORS AND LOADERS

The FOX has many mounting options as it can be either front or rear mounted on tractors through category 1 or 2. The FOX can also be front mounted on loaders. All that is required is an oil flow of 25 or 40 liters per minute.

Note that the Multi Carrier FOX is delivered unassembled. One should expect to use approximately 2 hours on final assembly.

MULTI CARRIER HXF



HXF 2302



6
Tools

l/min
25

AHS 45°

2
years
WARRANTY

For skid steer loaders, compact tractors and small front end loaders.

| MODEL | 2302 |
|------------------------------------|------|
| Reach (center vehicle/end LRS) (m) | 1.8 |
| Transport width (m) | 1.3 |
| Min. oil flow (l/min) | 25 |
| Alt. oil flow (l/min) | - |
| Weight without brackets (kg) | 110 |

HXF 2802 & 2802 TELE



11
Tools

l/min
25-40

AHS 45°

2
years
WARRANTY

The middle model in the HXF series, for front end loader mount mainly.

| | 2802 | 2802 T |
|------------------------------------|------|-----------|
| Reach (center vehicle/end LRS) (m) | 2.2 | 1.4 - 2.2 |
| Transport width (m) | 2.0 | 2.4 |
| Min. oil flow (l/min) | 40 | 40 |
| Alt. oil flow (l/min) | 25 | 25 |
| Weight without brackets (kg) | 150 | 175 |

HXF 3302 & 3302 TELE



13
Tools

l/min
40-50

AHS 45°

2
years
WARRANTY

For telehandlers, front end loaders, wheel loaders and excavators.

| | 3302 | 3302 T |
|------------------------------------|------|-----------|
| Reach (center vehicle/end LRS) (m) | 2.5 | 1.6 - 2.5 |
| Transport width (m) | 2.2 | 2.5 |
| Min. oil flow (l/min) | 50 | 50 |
| Alt. oil flow (l/min) | 40 | 40 |
| Weight without brackets (kg) | 200 | 230 |

THE SERIES OF MULTI CARRIERS WITH COUNTLESS POSSIBILITIES

The GreenTec Multi Carrier HXF series is a unique solution with high versatility and flexibility. You can easily mount and dismount a wide selection of tools for maintenance of green areas. We offer tools for hedgerow maintenance, grass mowing, hedge trimming and weed removal.

The Multi Carrier HXF frames can be fitted on almost all vehicles, such as skid steers, front end loaders, telehandlers, excavators and diggers. The only requirement is that the vehicle can supply 25-50 liters of oil per minute (6.6-13.2 gpm), depending on the size of the Multi Carrier and the attached tool.

Two HXF models are also available in telescopic versions.

With a telescopic solution, you can reduce the reach of the arm on the Multi Carrier HXF. It is especially useful in areas with limited space, such as sidewalks, bicycle paths and orchards.

MULTI CARRIER HXF 2302



6
Tools

25
l/min

AHS 45°

2
years
WARRANTY



| MODEL | 2302 |
|-------------------------------|--------------------|
| Reach (center of vehicle) (m) | 1.8 |
| Transport width (m) | 1.3 |
| Min. oil flow | 25 l/min @ 180 bar |
| Weight (kg) | 110 |



VERSATILE & FLEXIBLE

The Multi Carrier HXF 2302 can easily be mounted on smaller vehicles, such as skid steer loaders and compact tractors with a minimum weight of 1,200 kg (2,646 lb).

Grass mowing, hedge cutting, shelterbelt maintenance and cleaning of pavements are easily done with this small, versatile and flexible machine.

STRONG ARGUMENTS

- High road safety
- Oil flow divider as standard
- Build in anti-cavitation valve
- Easy attachment system
- Low weight

MULTI CARRIER HXF 2802 & 2802 TELE

11

Tools



l/min

25-40



AHS 45°

2
years

WARRANTY



| MODEL | 2802 | 2802 T |
|-------------------------------|--------------------------|-----------|
| Reach (center of vehicle) (m) | 2.2 | 1.4 - 2.2 |
| Transport width (m) | 2.0 | 2.4 |
| Min. oil flow | 25 or 40 l/min @ 180 bar | |
| Weight (kg) | 150 | 175 |



QUICK MOUNTING

The Multi Carrier HXF 2802 can be installed on front end loaders and large skid steer loaders in a few minutes.

A large selection of tools for hedge cutting and hedgerow trimming is available. It is also possible to mount a barrier mower or weed brush on the Multi Carrier HXF 2802.

STRONG ARGUMENTS

- Mounted on front end loaders and large skid steer loaders
- AHS, Automatic Hydraulic Security
- Build in anti cavitation valve
- Easy attachment system
- Low weight

MULTI CARRIER HXF 3302 & 3302 TELE



13
Tools

l/min
40-50

AHS 45°

2
years
WARRANTY



| MODEL | 3302 | 3302 T |
|-------------------------------|--------------------------|-----------|
| Reach (center of vehicle) (m) | 2.5 | 1.6 - 2.5 |
| Transport width (m) | 2.2 | 2.5 |
| Min. oil flow | 40 or 50 l/min @ 180 bar | |
| Weight (kg) | 200 | 230 |



RESILIENT & DURABLE

The Multi Carrier HXF 3302 is the largest model in the HXF series and is mainly mounted on telehandlers, large front end loaders and backhoes.

When the HXF 3302 is mounted on a telehandler, it can advantageously be a left hand version. Thus, the driver has a perfect view to the tool.

A large selection of tools for hedge trimming and shelterbelt maintenance can be fitted to the Multi Carrier HXF.

STRONG ARGUMENTS

- Mounted on bigger vehicles
- AHS, Automatic Hydraulic Security
- Build in anti cavitation valve
- Easy attachment system
- Low weight

| MULTI CARRIER HXF MODEL | 2302 | 2802 | 2802 TELE | 3302 | 3302 TELE |
|--|------------|------------|-----------|------------|-----------|
| Reach (center of vehicle) (m) | 1.8 | 2.2 | 1.4 - 2.2 | 2.5 | 1.6 - 2.5 |
| Transport width (m) | 1.3 | 2.0 | 2.4 | 2.2 | 2.5 |
| Oil flow (l/min) | 25 | 25/40 | 25/40 | 40/50 | 40/50 |
| Weight (kg) | 110 | 150 | 175 | 200 | 230 |
| Mechanical cutting angle control | Standard | Standard | - | Standard | - |
| Hydraulic cutting angle control | Optional | Optional | Standard | Optional | Standard |
| E-control | Optional | Optional | Standard | Optional | Standard |
| Switch from working to transport position | Mechanical | Mechanical | Hydraulic | Mechanical | Hydraulic |
| AHS, Automatic Hydraulic Security (break-back) | Standard | Standard | Standard | Standard | Standard |
| Oil flow divider | Standard | Standard | Standard | Standard | Standard |
| Anti-cavitation and pressure valve | Standard | Standard | Standard | Standard | Standard |
| 1.5 m hose kit | Standard | Standard | Standard | Standard | Standard |
| 8.5 m hose kit, 3 pcs. | Optional | Optional | Optional | Optional | Optional |
| 8.5 m hose kit, 5 pcs. | Optional | Optional | - | Optional | - |
| Quick hitch system hydraulic and mechanical | Standard | - | - | - | - |
| Euro brackets or universal plate | Standard | Standard | Standard | Standard | Standard |
| Other bracket types | Optional | Optional | Optional | Optional | Optional |
| Counterweights | Optional | Optional | Optional | Optional | Optional |



OIL FLOW DIVIDER

An oil flow divider is part of the standard equipment.

ANTI-CAVITATION VALVE

Ensures that the hydraulic system does not create voids at different loads.

SAFETY VALVE

All HXF models are delivered with an integrated pressure valve as standard equipment.



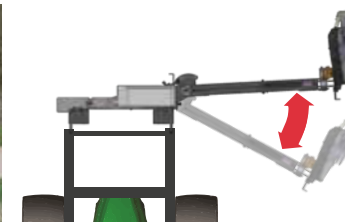
RIGHT/LEFT VERSION

The Multi Carriers are available as a right or left version. When the HXF is mounted on a telehandler, it can advantageously be a left hand version. Thus, the driver has a perfect view to the tool.



ROAD SAFETY

All tools mounted on the HXF frames are pointing toward the carrying vehicle during transport, which makes it one of the safest solutions on the market.



SAFETY BREAK-BACK

AHS, Automatic Hydraulic Security with pre-pressure, is included on all Multi Carriers.



E-CONTROL (EXTRA)

E-control and hydraulic ram for cutting angle are available as optional equipment.

ATTACHMENT TOOLS

ATTACHED TO HXF
2302



Quadsaw LRS 1402



Barrier Mower RI 60 & 80

ATTACHED TO HXF
2802 & 2802 TELE



Quadsaw LRS 1402



Quadsaw LRS 1602



Cutterbar HL 152



Weed Clearing Brush BR 70



Cutterbar HL 152 - 212



Cutterbar HS 172



Rotary Hedge Cutter RC 102

GreenTec offers
the widest selection of tools
for landscape maintenance.

View more on:

www.GreenTec.eu



Rotary Hedge Cutter RC 102



Rotary Hedge Cutter RC 132

**ATTACHED TO HXF
3302 & 3302 TELE**



Weed Clearing Brush BR 70



Quadsaw LRS 1602



Quadsaw LRS 2002



Quadsaw LRS 2402



Barrier Mower RI 60 & 80



Cutterbar HL 182 & 212



Cutterbar HS 172 - 242



Cutterbar HX 170 - 270



BRACKETS



EQUIPMENT

View more on:

www.GreenTec.eu

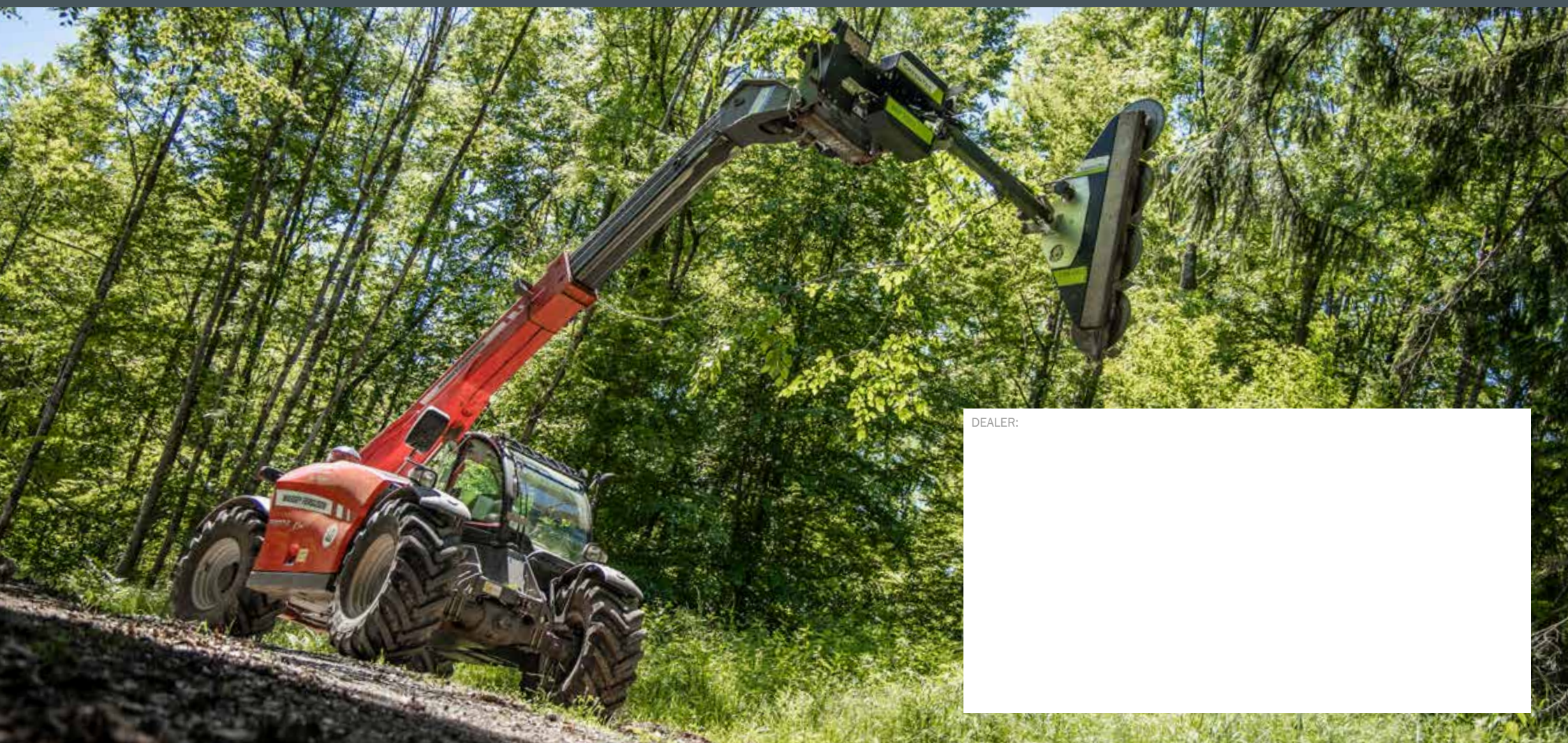


Rotary Hedge Cutter RC 132



Rotary Hedge Cutter RC 162





DEALER:

Blank white box for dealer information.

We reserve the right to make technical changes. Technical information and images are approximated. VER 5.0 EN